



Business Services Authority

NHS Discharge Medicines Service (DMS)

Developer Guide to the NHS Business Services Authority API for DMS claims

ChangeLog

Version Control	Date	Purpose
0.1	12 Apr 2021	Initial Draft
0.2	21 Apr 2021	Updated
0.3	08 July 2021	Added questionnaire setup and response details
0.4	1 Nov 2021	Updated questionnaire setup and response details
1.0	22 April 2022	Added discharge date, referrer org ODS, Onward referral date
1.1	28 June 2022	Updated PRESC_INTERCEPTED values, Removed time from ASSESSMENT_DATE, REFERRED_ORG_ODS to remain optional in all instances
1.2	21 July 2022	Added Assessment date for each of the stages, Removed gender field, Added option COMMUNITY_PHARMACY to S3_SIGNPOSTED_TO
1.3	16 Mar 2023	Remove discharge date, S1_ACTIONS_OTHER, S1_ACTIONS_DISCUSSED, S1_ACTIONS_DISCUSSED_WITH, S1_ACTIONS_DISCUSSED_WITH_OTHER, S2_ISSUES, S2_ISSUES_OTHER, S2_ISSUES_DISCUSSED, S2_ISSUES_DISCUSSED_WITH, S2_ISSUES_DISCUSSED_WITH_OTHER. Update REFERRED_ORG_ODS to 0 but required with condition and update value of GP to GP Practice. Remove PCN clinical from signpostedTo. Add REFERRER_CASE_REFERENCE
1.4	21 June 2023	Added INDEPENDENT_PRESCRIBER to professional role options

Table of Contents

- [NHS Discharge Medicines Service \(DMS\)](#)
 - [Developer Guide to the NHS Business Services Authority API for DMS](#)
 - [ChangeLog](#)
- [Table of Contents](#)
 - [NHS Discharge Medicines Service](#)
 - [Document Background](#)
- [API Connectivity](#)
 - [API Access Process Flow](#)
 - [Create Process Flow](#)
 - [Update Process Flow](#)
 - [Get Process Flow](#)
 - [Delete Process Flow](#)
- [Developer Guide to set up DMS QuestionnaireResponse](#)
- [Developer Guide to Create DMS Submission](#)
 - [Step 1: Gather your materials](#)
 - [Step 2: Prepare the request JSON](#)
 - [Step 3: Send the create request message](#)
 - [Step 4: Receive your response](#)
 - [Other potential responses:](#)
 - [403: Forbidden](#)
 - [500: Unexpected error](#)
 - [400: Bad Request](#)
- [Developer Guide to Update Existing DMS Submission](#)
 - [Step 1: Gather your materials](#)
 - [Step 2: Prepare the request JSON](#)
 - [Step 3: Send the update request message](#)
 - [Step 4: Receive your response](#)
 - [Other potential responses:](#)
 - [403: Forbidden](#)
 - [500: Unexpected error](#)
 - [400: Bad Request](#)
 - [404: Not Found](#)
- [Developer Guide to DMS Submission Deletions](#)
 - [Step 1: Gather your materials](#)
 - [Step 2: Send the delete request Message](#)
 - [Step 3: Receive your response](#)
 - [Other potential responses:](#)
 - [403: Forbidden](#)
 - [500: Unexpected error](#)
 - [404: Not Found](#)
- [Developer Guide to Get DMS Submission](#)
 - [Step 1: Gather your materials](#)
 - [Step 2: Send the Get Questionnaire Response Message](#)
 - [Step 3: Receive your response](#)
 - [Other potential responses:](#)
 - [403: Forbidden](#)

- [500: Unexpected error](#)
- [404: Not Found](#)

- [Annex: Non NHS Numbers](#)
- [Annex: Professional Role](#)
- [Annex: Consultation Method](#)
- [Annex: Consultation Outcome](#)
- [Annex: Patient referred to](#)
- [Annex: Community Pharmacy Contractual Framework services](#)
- [Annex: Non-Provision Reason](#)

NHS Discharge Medicines Service

The NHS Discharge Medicines Service is a new essential service for community pharmacy contractors. As an essential service, it must be provided by all community pharmacy contractors.

The service has been established to ensure better communication of changes to a patient's medication when they leave hospital and to reduce incidences of avoidable harm caused by medicines. By referring patients to community pharmacy on discharge with information about medication changes made in hospital, community pharmacy can support patients to improve outcomes, prevent harm and reduce readmissions.

Document Background

This document is intended to provide pharmacy clinical service platform providers with the information necessary to submit details of service provisions to the NHS Business Services Authority (NHS BSA), to pre-populate claims to be made by community pharmacy providers. We are considering QuestionnaireResponse resource as our claim object, which contains all the required fields for a DMS claim in the form of Question and answers.

[DN: This is a normal REST API but the request and response objects are structured similar to the FHIR resources like Questionnaire, QuestionnaireResponse and OperationOutcome]

API Connectivity

Connection to the NHS BSA API has the following criteria, as patient data is present and being transmitted:

- Over HTTPS on port 443
- Using TLSv1.2 only
- Authentication
 - IP whitelisting

Current test endpoints are:

POST <https://stg.api.dms.pharmacy.mys.nhsbsa.nhs.uk/v1/QuestionnaireResponse>

GET <https://stg.api.dms.pharmacy.mys.nhsbsa.nhs.uk/v1/QuestionnaireResponse/{{id}}>.

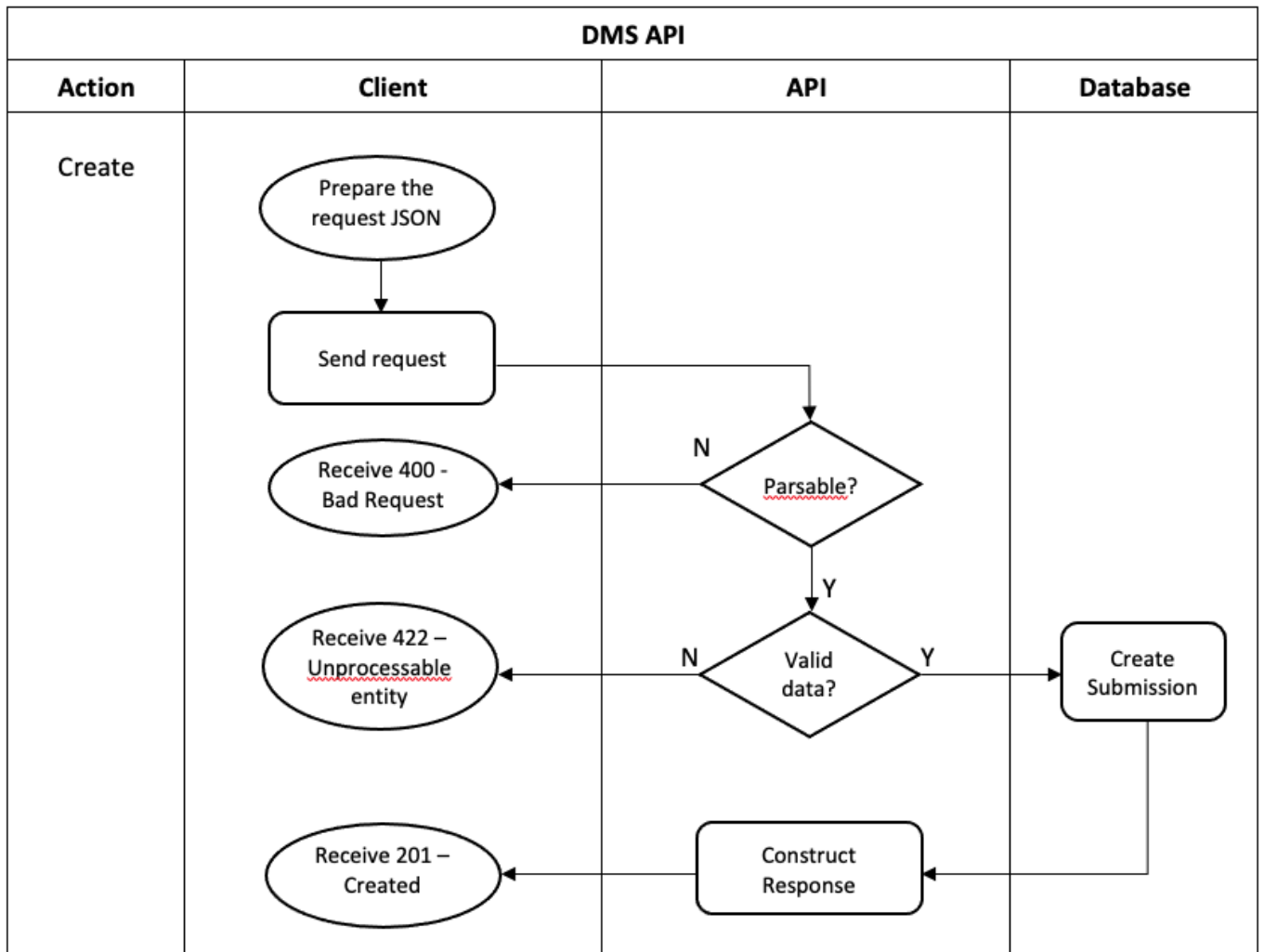
PUT <https://stg.api.dms.pharmacy.mys.nhsbsa.nhs.uk/v1/QuestionnaireResponse/{{id}}>.

DELETE <https://stg.api.dms.pharmacy.mys.nhsbsa.nhs.uk/v1/QuestionnaireResponse/{{id}}>.

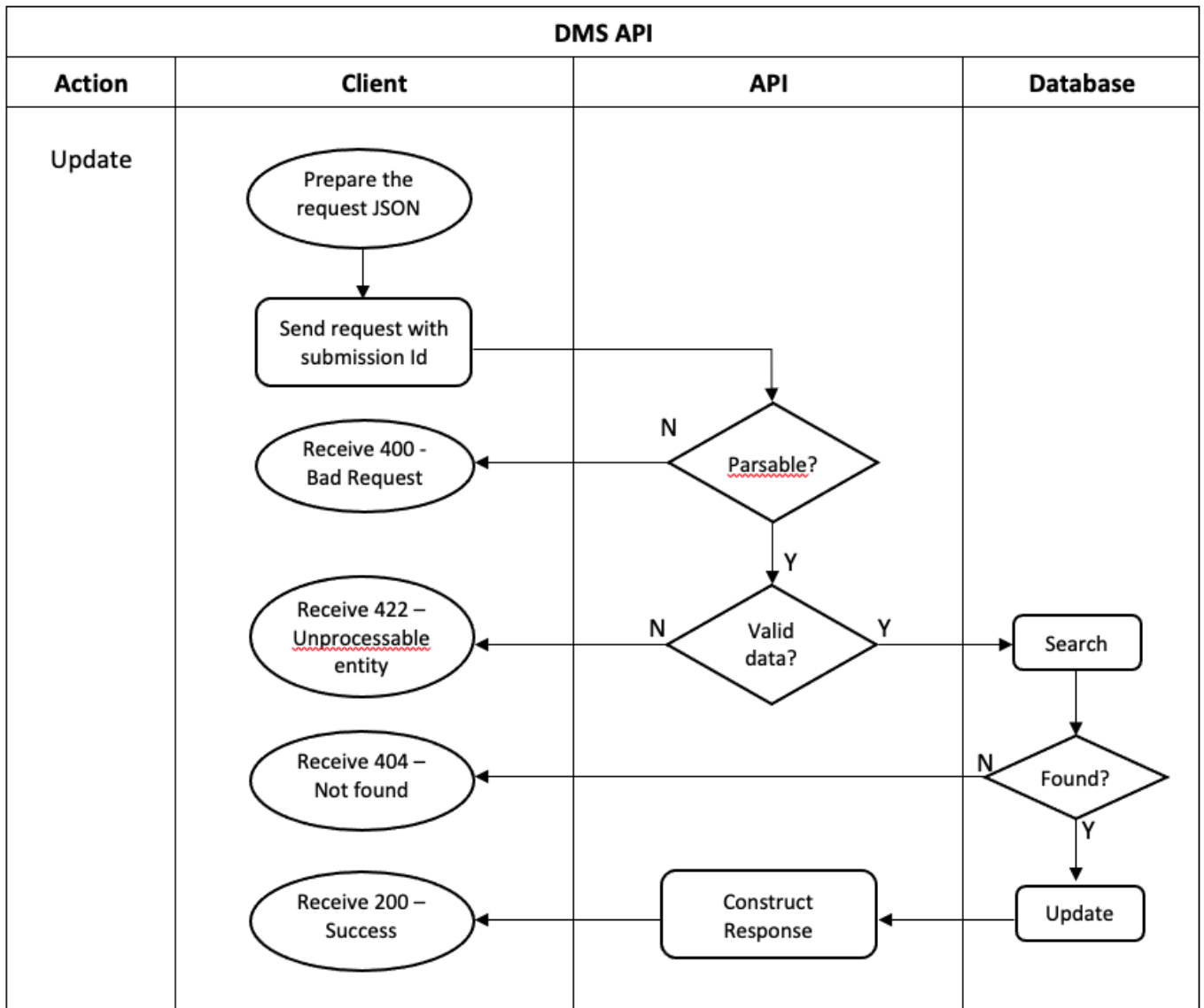
[DN: These are subject to many changes going forward – just a placeholder really]

API Access Process Flow

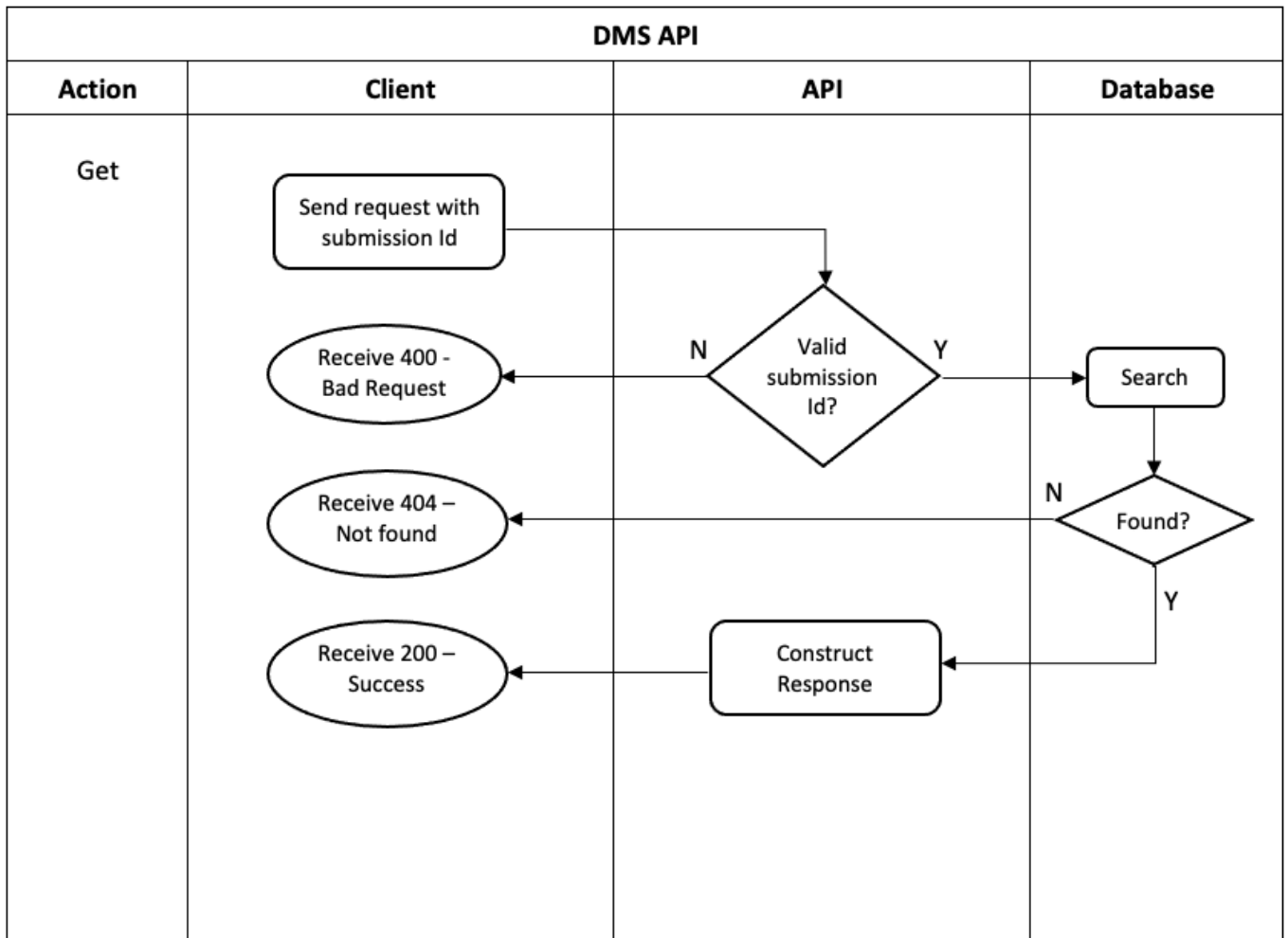
Create Process Flow



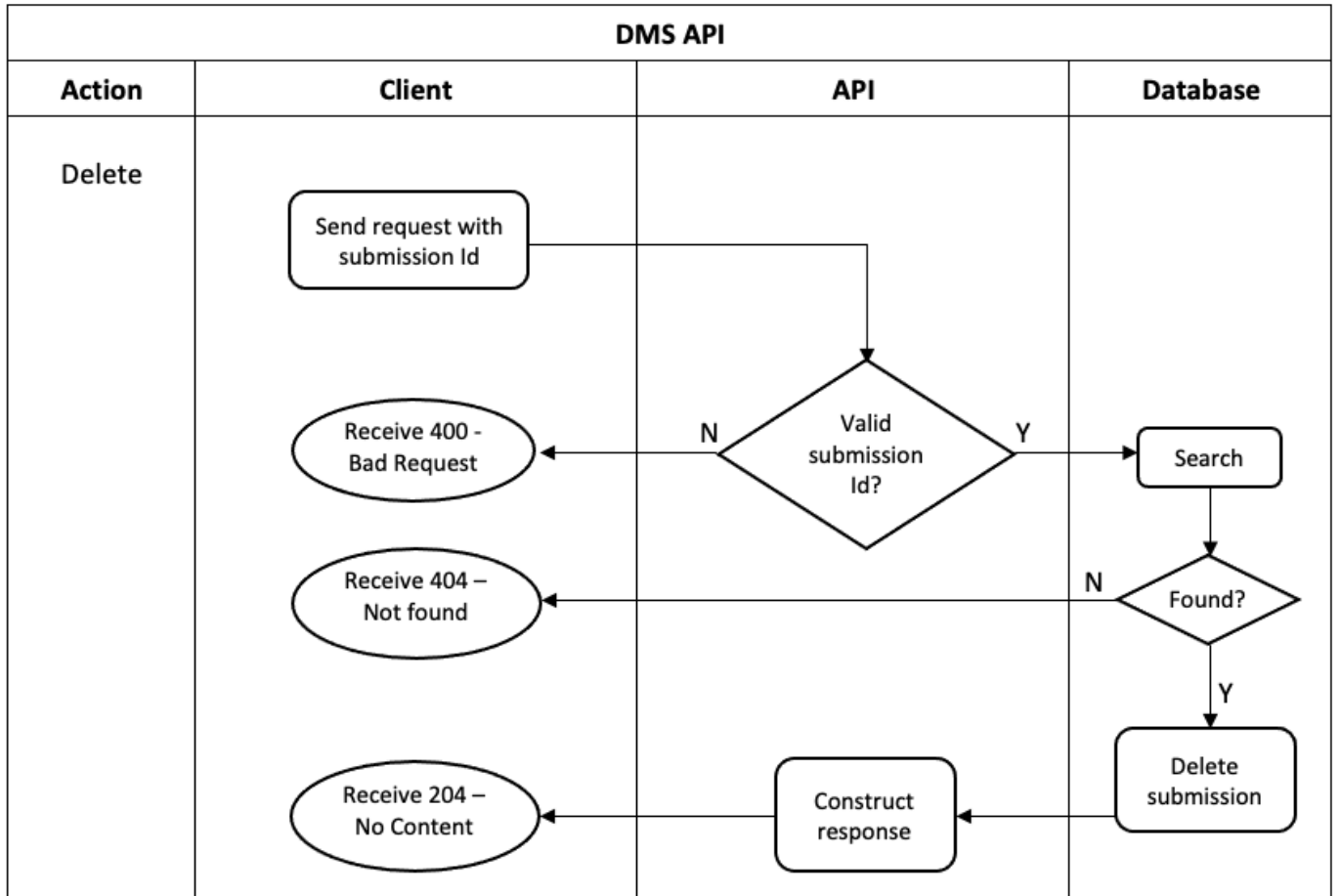
Update Process Flow



Get Process Flow



Delete Process Flow



Developer Guide to set up DMS QuestionnaireResponse

Below JSON contains a DMS questionnaire setup, which lists all the required questions to be answered with given options. Based on which you can build your QuestionnaireResponse object in the Create (POST) or Update (PUT) request.

"UKCore-Questionnaire-DMS" is the unique ID for DMS Questionnaire.

For more details on the structure of FHIR Questionnaire resource you can go to: <http://www.hl7.org/FHIR/questionnaire.html>

```
{
  "resourceType": "Questionnaire",
  "title": "DMS Questionnaire setup",
  "id": "UKCore-Questionnaire-DMS",
  "item": [
    {
      "linkId": "referralDetails",
      "text": "Referral Details",
      "type": "group",
      "required": true,
      "item": [
        {
          "linkId": "referralDate",
          "text": "What date did you receive the referral?",
          "type": "date",
          "required": true
        },
        {
          "linkId": "referrer",
          "text": "Which trust did the referral come from? (name or organisation code)",
          "type": "string",
          "required": true
        },
        {
          "linkId": "referrerCaseReference",
          "text": "The case referral number.",
          "type": "string",
          "required": false
        }
      ]
    },
    {
      "linkId": "stage1Questions",
      "text": "Stage 1 questions",
      "type": "group",
      "required": true,
      "item": [
        {
          "linkId": "wasStage1Provided",
          "text": "Was Stage 1 provided?",
          "type": "choice",
          "required": true,
          "answerOption": [
            {
              "valueCoding": {
                "code": "Y",
                "display": "Yes"
              }
            }
          ]
        }
      ]
    }
  ]
}
```

```

    {
      "valueCoding": {
        "code": "N",
        "display": "No"
      }
    }
  ],
  "item": [
    {
      "linkId": "whyStage1NotProvided",
      "text": "Why stage 1 not provided?",
      "type": "choice",
      "required": true,
      "enableWhen": [
        {
          "question": "wasStage1Provided",
          "operator": "=",
          "answerCoding": {
            "code": "N"
          }
        }
      ]
    },
    "answerOption": [
      {
        "valueCoding": {
          "code": "DECLINED",
          "display": "Declined"
        }
      },
      {
        "valueCoding": {
          "code": "ONWARD_REFERRAL",
          "display": "Onward referral to another pharmacy"
        }
      },
      {
        "valueCoding": {
          "code": "NOT_ATTENDED",
          "display": "Did not attend"
        }
      }
    ]
  ],
  {
    "linkId": "stage1AssessmentDate",
    "text": "What date was the service provided?",
    "type": "date",
    "required": true,
    "enableWhen": [
      {
        "question": "wasStage1Provided",
        "operator": "=",
        "answerCoding": {
          "code": "Y"
        }
      }
    ]
  }
],
{

```

```

"linkId": "whoProvidedStage1",
"text": "Who provides stage 1?",
"type": "choice",
"required": true,
"enableWhen": [
  {
    "question": "wasStage1Provided",
    "operator": "=",
    "answerCoding": {
      "code": "Y"
    }
  }
],
"answerOption": [
  {
    "valueCoding": {
      "code": "PHARMACIST",
      "display": "Pharmacist"
    }
  },
  {
    "valueCoding": {
      "code": "PHARMACY_TECHNICIAN",
      "display": "Pharmacy technician"
    }
  }
],
},
{
  "linkId": "werePrescriptionsIntercepted",
  "text": "Were prescriptions in supply system intercepted to prevent the patient receiving inappropriate
supply?",
  "type": "choice",
  "required": true,
  "enableWhen": [
    {
      "question": "wasStage1Provided",
      "operator": "=",
      "answerCoding": {
        "code": "Y"
      }
    }
  ],
  "answerOption": [
    {
      "valueCoding": {
        "code": "Prescription(s) intercepted",
        "display": "Yes"
      }
    },
    {
      "valueCoding": {
        "code": "Prescription(s) not intercepted",
        "display": "No"
      }
    }
  ]
},
{

```

```

"linkId": "anyActionsIdentifiedInStage1",
"text": "Were there any actions identified?",
"type": "choice",
"required": true,
"enableWhen": [
  {
    "question": "wasStage1Provided",
    "operator": "=",
    "answerCoding": {
      "code": "Y"
    }
  }
],
"answerOption": [
  {
    "valueCoding": {
      "code": "Y",
      "display": "Yes"
    }
  },
  {
    "valueCoding": {
      "code": "N",
      "display": "No"
    }
  }
]
}
]
}
],
{
"linkId": "stage2Questions",
"text": "Stage 2 questions",
"type": "group",
"required": true,
"item": [
  {
    "linkId": "wasStage2Provided",
    "text": "Was Stage 2 provided?",
    "type": "choice",
    "required": true,
    "answerOption": [
      {
        "valueCoding": {
          "code": "Y",
          "display": "Yes"
        }
      },
      {
        "valueCoding": {
          "code": "N",
          "display": "No"
        }
      }
    ]
  },
  {
    "linkId": "wasStage2Provided",
    "text": "Was Stage 2 provided?",
    "type": "choice",
    "required": true,
    "answerOption": [
      {
        "valueCoding": {
          "code": "Y",
          "display": "Yes"
        }
      },
      {
        "valueCoding": {
          "code": "N",
          "display": "No"
        }
      }
    ]
  }
]
}
],
"item": [
  {

```

```

"linkId": "whyStage2NotProvided",
"text": "Why stage 2 not provided?",
"type": "choice",
"required": true,
"enableWhen": [
  {
    "question": "wasStage2Provided",
    "operator": "=",
    "answerCoding": {
      "code": "N"
    }
  }
],
"answerOption": [
  {
    "valueCoding": {
      "code": "DECLINED",
      "display": "Declined"
    }
  },
  {
    "valueCoding": {
      "code": "ONWARD_REFERRAL",
      "display": "Onward referral to another pharmacy"
    }
  },
  {
    "valueCoding": {
      "code": "NOT_ATTENDED",
      "display": "Did not attend"
    }
  }
]
},
{
"linkId": "stage2AssessmentDate",
"text": "What date was the service provided?",
"type": "date",
"required": true,
"enableWhen": [
  {
    "question": "wasStage2Provided",
    "operator": "=",
    "answerCoding": {
      "code": "Y"
    }
  }
]
},
{
"linkId": "whoProvidedStage2",
"text": "Who completed stage 2?",
"type": "choice",
"required": true,
"enableWhen": [
  {
    "question": "wasStage2Provided",
    "operator": "=",
    "answerCoding": {

```

```
        "code": "Y"
      }
    }
  ],
  "answerOption": [
    {
      "valueCoding": {
        "code": "PHARMACIST",
        "display": "Pharmacist"
      }
    },
    {
      "valueCoding": {
        "code": "PHARMACY_TECHNICIAN",
        "display": "Pharmacy technician"
      }
    }
  ]
},
{
  "linkId": "anyIssuesIdentifiedInStage2",
  "text": "Were there any issues identified?",
  "type": "choice",
  "required": true,
  "enableWhen": [
    {
      "question": "wasStage2Provided",
      "operator": "=",
      "answerCoding": {
        "code": "Y"
      }
    }
  ],
  "answerOption": [
    {
      "valueCoding": {
        "code": "Y",
        "display": "Yes"
      }
    },
    {
      "valueCoding": {
        "code": "N",
        "display": "No"
      }
    }
  ]
}
]
},
]
},
{
  "linkId": "stage3Questions",
  "text": "Stage 3 questions",
  "type": "group",
  "required": true,
  "item": [
    {
```

```

"linkId": "wasStage3Provided",
"text": "Was Stage 3 provided?",
"type": "choice",
"required": true,
"answerOption": [
  {
    "valueCoding": {
      "code": "Y",
      "display": "Yes"
    }
  },
  {
    "valueCoding": {
      "code": "N",
      "display": "No"
    }
  }
],
"item": [
  {
    "linkId": "whyStage3NotProvided",
    "text": "Why stage 3 not provided?",
    "type": "choice",
    "required": true,
    "enableWhen": [
      {
        "question": "wasStage3Provided",
        "operator": "=",
        "answerCoding": {
          "code": "N"
        }
      }
    ],
    "answerOption": [
      {
        "valueCoding": {
          "code": "DECLINED",
          "display": "Declined"
        }
      },
      {
        "valueCoding": {
          "code": "ONWARD_REFERRAL",
          "display": "Onward referral to another pharmacy"
        }
      },
      {
        "valueCoding": {
          "code": "NOT_ATTENDED",
          "display": "Did not attend"
        }
      }
    ]
  },
  {
    "linkId": "stage3AssessmentDate",
    "text": "What date was the service provided?",
    "type": "date",
    "required": true,

```

```

"enableWhen": [
  {
    "question": "wasStage3Provided",
    "operator": "=",
    "answerCoding": {
      "code": "Y"
    }
  }
]
},
{
  "linkId": "whoProvidedStage3",
  "text": "Who provides stage 3?",
  "type": "choice",
  "required": true,
  "enableWhen": [
    {
      "question": "wasStage3Provided",
      "operator": "=",
      "answerCoding": {
        "code": "Y"
      }
    }
  ],
  "answerOption": [
    {
      "valueCoding": {
        "code": "PHARMACIST",
        "display": "Pharmacist"
      }
    },
    {
      "valueCoding": {
        "code": "PHARMACY_TECHNICIAN",
        "display": "Pharmacy technician"
      }
    }
  ]
},
{
  "linkId": "stage3ConsultationMethod",
  "text": "Select the method of consultation",
  "type": "choice",
  "required": true,
  "enableWhen": [
    {
      "question": "wasStage3Provided",
      "operator": "=",
      "answerCoding": {
        "code": "Y"
      }
    }
  ],
  "answerOption": [
    {
      "valueCoding": {
        "code": "FTF_PHARMACY",
        "display": "Face to face (pharmacy)"
      }
    }
  ]
}

```



```

    },
    {
      "valueCoding": {
        "code": "FTF_HOME",
        "display": "Face to face (patient's home)"
      }
    },
    {
      "valueCoding": {
        "code": "TELEPHONE",
        "display": "Telephone"
      }
    },
    {
      "valueCoding": {
        "code": "TELEMEDICINE",
        "display": "Telemedicine"
      }
    }
  ]
},
{
  "linkId": "stage3ConsultationOutcome",
  "text": "Select the outcome of consultation",
  "type": "choice",
  "required": true,
  "enableWhen": [
    {
      "question": "wasStage3Provided",
      "operator": "=",
      "answerCoding": {
        "code": "Y"
      }
    }
  ],
  "answerOption": [
    {
      "valueCoding": {
        "code": "MEDICINE_REGIMEN_ADVISED",
        "display": "Advice provided on medicines regimen and questions answered"
      }
    },
    {
      "valueCoding": {
        "code": "ONWARD_REFERRAL",
        "display": "Onward referral"
      }
    },
    {
      "valueCoding": {
        "code": "CPCF_SERVICE_PROVIDED",
        "display": "Other CPCF service provided"
      }
    }
  ],
  "item": [
    {
      "linkId": "cpcfServicesProvided",
      "text": "Which Community Pharmacy Contractual Framework services provided? (Select all that apply)",

```

```

"type": "choice",
"required": false,
"enableWhen": [
  {
    "question": "stage3ConsultationOutcome",
    "operator": "=",
    "answerCoding": {
      "code": "CPCF_SERVICE_PROVIDED"
    }
  }
],
"answerOption": [
  {
    "valueCoding": {
      "code": "DISPOSAL_OF_MEDS",
      "display": "Disposal of unwanted medicines"
    }
  },
  {
    "valueCoding": {
      "code": "NEW_MEDICINE_SERVICE",
      "display": "New Medicine Service"
    }
  },
  {
    "valueCoding": {
      "code": "HEALTHY_LIFESTYLE_ADVICE",
      "display": "Healthy Lifestyle Advice"
    }
  },
  {
    "valueString": "Free text for other services provided",
    "valueCoding": {
      "code": "OTHER",
      "display": "Other"
    }
  }
],
{
  "linkId": "signpostedTo",
  "text": "where patient has been signposted to",
  "type": "choice",
  "required": false,
  "enableWhen": [
    {
      "question": "stage3ConsultationOutcome",
      "operator": "=",
      "answerCoding": {
        "code": "ONWARD_REFERRAL"
      }
    }
  ],
  "answerOption": [
    {
      "valueCoding": {
        "code": "GP",
        "display": "GP Practice"
      }
    }
  ]
}

```

```
    },
    {
      "valueCoding": {
        "code": "HOSPITAL",
        "display": "Hospital"
      }
    },
    {
      "valueString": "Free text for other issues or actions identified",
      "valueCoding": {
        "code": "OTHER",
        "display": "Other"
      }
    }
  ]
},
{
  "linkId": "referrerOrgOds",
  "text": "identifier / ODS code, of the organisation being referred to",
  "type": "string",
  "required": false,
  "enableWhen": [
    {
      "question": "stage3ConsultationOutcome",
      "operator": "=",
      "answerCoding": {
        "code": "ONWARD_REFERRAL"
      }
    }
  ]
},
{
  "linkId": "onwardReferralDate",
  "text": "Date of onward referral in yyyy-MM-dd format",
  "type": "date",
  "required": false,
  "enableWhen": [
    {
      "question": "stage3ConsultationOutcome",
      "operator": "=",
      "answerCoding": {
        "code": "ONWARD_REFERRAL"
      }
    }
  ]
}
]
}
]
}
]
}
]
}
```

Developer Guide to Create DMS Submission

Create: Step 1: Gather your materials

You will need the following to follow through this walkthrough:

Field	Mandatory / Optional	Type	Description
PLATFORM_DEPOSIT_ID	M	String	A string that uniquely identifies this claim. Each platform will be provided with a pattern to use. For example, PharmOutcomes uses the pattern PEM- <i>nnn</i> -SPID- <i>nnnnnn</i> and Sonar uses the pattern SON- <i>nnnnnnnn</i> to uniquely identify this deposit in audits and CRUD operations. Max. size 255. For example SUP-0000000012334
PATIENT_NHSNO	M	String	The unique identifier for a person within the NHS in England and Wales. If the NHS Number is not available provide one of the values mentioned in Annex: Non nhs number . Valid NHS number by common bsa validation. Size must be 10.
PATIENT_GPODS	M	String	The ODS code of the patient's GP surgery. This can be the ODS code of the practice and not of the branch surgery. Use dummy code X99999 when ODS code is not known/unavailable. Size max. 10.
REFERRAL_DATE	M	String	Date you received the referral in yyyy-MM-dd format. for example 2022-05-10
REFERRER_CASE_REFERENCE	O	String	The case referrer number. Regex for format [A-Za-z0-9/-]
REFERRER_ORG_ODS	M	String	Code of the trust from which the referral came from. Regex for format [A-Za-z0-9]{1,10}. For example : RXXXX
CLAIMANT_ODS	M	String	The Organisational Data Service (ODS) code of the pharmacy provider who provided the service and is therefore making the claim. Regex for format [A-Za-z0-9]{1,10}. For example FXXXX
CLAIM_YEAR_MONTH	M	String	Date for which this submission belongs to in yyyy-MM format. For example 2021-06.
WAS_S1_PROVIDED	M (default value : N)	String	Was Stage 1 of the DMS Provided? Y / N
WHY_S1_NOT_PROVIDED	O (required if stage 1 not provided)	String	Reason why stage 1 not provided with one of the values from Annex: Non-Provision Reason
S1_ASSESSMENT_DATE	O (required if stage 1 provided)	String	The date of assessment in yyyy-MM-dd format. for example 2022-05-10
S1_PROVIDED_BY	O (required if stage 1 provided)	String	The role of the person providing the service. With one of the value mentioned in Annex: Professional Role
S1_ACTIONS_IDENTIFIED	O (required if stage 1 provided)	String	Were there any issues or clinical actions identified in stage 1? Y / N value
PRESC_INTERCEPTED	O (required if stage 1 was provided)	String	Were prescriptions in supply system intercepted to prevent the patient receiving inappropriate supply? With any one value of - Prescription(s) intercepted / Prescription(s) not intercepted
WAS_S2_PROVIDED	M (default value : N)	String	Was Stage 2 of the DMS Provided? Y / N
WHY_S2_NOT_PROVIDED	O (required if stage 2 not provided)	String	Reason why stage 2 not provided with one of the values from Annex: Non-Provision Reason

S2_ASSESSMENT_DATE	0 (required if stage 2 provided)	String	The date of assessment in yyyy-MM-dd format. for example 2022-05-10
S2_PROVIDED_BY	0 (required if stage 2 provided)	String	The role of the person providing the service. With one of the value mentioned in Annex: Professional Role
S2_ISSUES_IDENTIFIED	0 (required if stage 2 provided)	String	Were there any issues identified? Y / N value
WAS_S3_PROVIDED	M (default value : N)	String	Was Stage 3 of the DMS Provided? Y / N
WHY_S3_NOT_PROVIDED	0 (required if stage 3 not provided)	String	Reason why stage 3 not provided with one of the values from Annex: Non-Provision Reason
S3_ASSESSMENT_DATE	0 (required if stage 3 provided)	String	The date of assessment in yyyy-MM-dd format. for example 2022-05-10
S3_PROVIDED_BY	0 (required if stage 3 was provided)	String	The role of the person providing the service. With one of the value mentioned in Annex: Professional Role
S3_CONSULT_METHOD	0 (required if stage 3 was provided)	String	Method of consultation with one of the value mentioned in Annex: Consultation method
S3_CONSULT_OUTCOME	0 (required if stage 3 was provided)	Array	Outcome of consultation with one of the value mentioned in Annex: Consultation outcome
S3_CPCF_SERVICE_PROVIDED	0 (required if 'Other CPCF service provided' is selected for S3_CONSULT_OUTCOME)	Array	Which Community Pharmacy Contractual Framework services provided with any of the values mentioned in Annex: Community Pharmacy Contractual Framework services
S3_SIGNPOSTED_TO	0 (required if 'Onward referral' is selected for S3_CONSULT_OUTCOME)	String	Details of where patient has been signposted to Annex: Signposted to
S3_SIGNPOSTED_TO_OTHER	0 (required if S3_SIGNPOSTED_TO is Other)	String	Free text for OTHER value. Max 255 chars
REFERRED_ORG_ODS	0 (required if 'Onward referral' is selected for S3_CONSULT_OUTCOME)	String	The identifier / ODS code, of the organisation being referred to. Regex for format [A-Za-z0-9]{1,10}. For example : RXXXX
ONWARD_REFERRAL_DATE	0 (required if 'Onward referral' is selected for S3_CONSULT_OUTCOME)	String	Date of onward referral in yyyy-MM-dd format. for example 2021-05-10

Create: Step 2: Prepare the request JSON

The message containing the DMS QuestionnaireResponse i.e claim information should follow json schema distributed by email.

The message must be utf-8 encoded. No XML messages are accepted.

```
{
  "resourceType": "QuestionnaireResponse",
  "contained": [
    {
      "resourceType": "Practitioner",
      "id": "practitionerId",
      "identifier": [
        {
          "value": "{{PATIENT_GPODS}}"
        }
      ]
    }
  ]
}
```

```

},
{
  "resourceType": "Organization",
  "id": "organizationId",
  "identifier": [
    {
      "value": "{{CLAIMANT_ODS}}"
    }
  ]
},
{
  "resourceType": "Patient",
  "id": "patientId",
  "identifier": [
    {
      "value": "{{PATIENT_NHS_NUMBER}}"
    }
  ],
  "generalPractitioner": [{
    "reference": "#practitionerId"
  }]
}
],
"identifier": {
  "value": "{{PLATFORM_DEPOSIT_ID}}"
},
"subject": {
  "reference": "#patientId"
},
"author": {
  "reference": "#organizationId"
},
"authored": "{{CLAIM_YEAR_MONTH}}",
"status": "in-progress",
"item": [
  {
    "linkId": "referralDetails",
    "item": [
      {
        "linkId": "referralDate",
        "answer": [
          {
            "valueDate": "{{REFERRAL_DATE}}"
          }
        ]
      },
      {
        "linkId": "referrer",
        "answer": [
          {
            "valueString": "{{REFERRER_ORG_ODS}}"
          }
        ]
      },
      {
        "linkId": "referrerCaseReference",
        "answer": [
          {
            "valueString": "{{REFERRER_CASE_REFERENCE}}"
          }
        ]
      }
    ]
  }
]

```

```

    }
  ]
}
],
{
  "linkId": "stage1Questions",
  "item": [
    {
      "linkId": "wasStage1Provided",
      "answer": [
        {
          "valueCoding": {
            "code": "{{WAS_S1_PROVIDED}}"
          }
        }
      ],
      "item": [
        {
          "linkId": "whyStage1NotProvided",
          "answer": [
            {
              "valueCoding": {
                "code": "{{WHY_S1_NOT_PROVIDED}}"
              }
            }
          ]
        }
      ],
    },
    {
      "linkId": "stage1AssessmentDate",
      "answer": [
        {
          "valueDate": "{{S1_ASSESSMENT_DATE}}"
        }
      ]
    },
    {
      "linkId": "whoProvidedStage1",
      "answer": [
        {
          "valueCoding": {
            "code": "{{S1_PROVIDED_BY}}"
          }
        }
      ]
    },
    {
      "linkId": "werePrescriptionsIntercepted",
      "answer": [
        {
          "valueCoding": {
            "code": "{{PRESC_INTERCEPTED}}"
          }
        }
      ]
    },
    {
      "linkId": "anyActionsIdentifiedInStage1",
      "answer": [

```

```

        {
            "valueCoding": {
                "code": "{{S1_ACTIONS_IDENTIFIED}}"
            }
        }
    ]
}
]
}
],
{
    "linkId": "stage2Questions",
    "item": [
        {
            "linkId": "wasStage2Provided",
            "answer": [
                {
                    "valueCoding": {
                        "code": "{{WAS_S2_PROVIDED}}"
                    }
                }
            ],
            "item": [
                {
                    "linkId": "whyStage2NotProvided",
                    "answer": [
                        {
                            "valueCoding": {
                                "code": "{{WHY_S2_NOT_PROVIDED}}"
                            }
                        }
                    ]
                }
            ],
        },
        {
            "linkId": "stage2AssessmentDate",
            "answer": [
                {
                    "valueDate": "{{S2_ASSESSMENT_DATE}}"
                }
            ],
        },
        {
            "linkId": "whoProvidedStage2",
            "answer": [
                {
                    "valueCoding": {
                        "code": "{{S2_PROVIDED_BY}}"
                    }
                }
            ],
        },
        {
            "linkId": "anyIssuesIdentifiedInStage2",
            "answer": [
                {
                    "valueCoding": {
                        "code": "{{S2_ISSUES_IDENTIFIED}}"
                    }
                }
            ],
        },
    ],
}

```



```
    }
  ]
}
]
}
],
{
  "linkId": "stage3Questions",
  "item": [
    {
      "linkId": "wasStage3Provided",
      "answer": [
        {
          "valueCoding": {
            "code": "{{WAS_S3_PROVIDED}}"
          }
        }
      ],
      "item": [
        {
          "linkId": "whyStage3NotProvided",
          "answer": [
            {
              "valueCoding": {
                "code": "{{WHY_S3_NOT_PROVIDED}}"
              }
            }
          ]
        }
      ],
    },
    {
      "linkId": "stage3AssessmentDate",
      "answer": [
        {
          "valueDate": "{{S3_ASSESSMENT_DATE}}"
        }
      ]
    },
    {
      "linkId": "whoProvidedStage3",
      "answer": [
        {
          "valueCoding": {
            "code": "{{S3_PROVIDED_BY}}"
          }
        }
      ]
    },
    {
      "linkId": "stage3ConsultationMethod",
      "answer": [
        {
          "valueCoding": {
            "code": "{{S3_CONSULT_METHOD}}"
          }
        }
      ]
    },
  ],
}
```

```

"linkId": "stage3ConsultationOutcome",
"answer": [
  {
    "valueCoding": {
      "code": "{{S3_CONSULT_OUTCOME}}"
    }
  }
],
"item": [
  {
    "linkId": "cpcfServicesProvided",
    "answer": [
      {
        "valueCoding": {
          "code": "{{S3_CPCF_SERVICE_PROVIDED}}"
        }
      }
    ]
  },
  {
    "linkId": "signpostedTo",
    "answer": [
      {
        "valueCoding": {
          "code": "{{S3_SIGNPOSTED_TO}}"
        },
        "valueString": "{{S3_SIGNPOSTED_TO_OTHER}}"
      }
    ]
  },
  {
    "linkId": "referrerOrgOds",
    "answer": [
      {
        "valueCoding": {
          "code": "{{REFERRED_ORG_ODS}}"
        }
      }
    ]
  },
  {
    "linkId": "onwardReferralDate",
    "answer": [
      {
        "valueDate": "{{ONWARD_REFERRAL_DATE}}"
      }
    ]
  }
]
}
]
}
]
}
]
}
]
}
]
}
]
}

```

Create: Step 3: Send the request message

You can now prepare and make a POST call to the NHSBSA API with the following pattern.

Type	Description
URL	https://stg.api.dms.pharmacy.mys.nhsbsa.nhs.uk/v1/QuestionnaireResponse
Http Headers	Content-Type: application/json, Accept: application/json, Cache-Control: no-cache
Body	JSON

Create: Step 4: Receive your response

A successful response will be sent synchronously within 30 seconds [DN: To check] with an http code 201 (Created) and contain a JSON representation of an object in the body of the response, containing the submission ID.

Response Headers:

Type	Description
Status	201 Created
Location	Location of the newly created resource. For example: https://stg.api.dms.pharmacy.mys.nhsbsa.nhs.uk/v1/QuestionnaireResponse/123e4567-e89b-12d3-a456-426614174000

Response Body:

```
{
  "resourceType": "QuestionnaireResponse",
  "id": "123e4567-e89b-12d3-a456-426614174000",
  "contained": [
    {
      "resourceType": "Practitioner",
      "id": "practitionerId",
      "identifier": [
        {
          "value": "{{PATIENT_GPODS}}"
        }
      ]
    },
    {
      "resourceType": "Organization",
      "id": "organizationId",
      "identifier": [
        {
          "value": "{{CLAIMANT_ODS}}"
        }
      ]
    },
    {
      "resourceType": "Patient",
      "id": "patientId",
      "identifier": [
        {
          "value": "{{PATIENT_NHS_NUMBER}}"
        }
      ],
      "generalPractitioner": [
        {
          "reference": "#practitionerId"
        }
      ]
    }
  ],
  "identifier": {
    "value": "{{PLATFORM_DEPOSIT_ID}}"
  },
  "subject": {
    "reference": "#patientId"
  },
  "author": {
    "reference": "#organizationId"
  },
  "authored": "{{CLAIM_YEAR_MONTH}}",
  "status": "in-progress",
  "item": [
    {
      "linkId": "referralDetails",
      "item": [
        {
          "linkId": "referralDate",
          "answer": [
            {
              "valueDate": "{{REFERRAL_DATE}}"
            }
          ]
        }
      ]
    }
  ]
}
```

```
},
{
  "linkId": "referrer",
  "answer": [
    {
      "valueString": "{{REFERRER_ORG_ODS}}"
    }
  ]
},
{
  "linkId": "referrerCaseReference",
  "answer": [
    {
      "valueString": "{{REFERRER_CASE_REFERENCE}}"
    }
  ]
}
]
},
{
  "linkId": "stage1Questions",
  "item": [
    {
      "linkId": "wasStage1Provided",
      "answer": [
        {
          "valueCoding": {
            "code": "{{WAS_S1_PROVIDED}}"
          }
        }
      ],
      "item": [
        {
          "linkId": "whyStage1NotProvided",
          "answer": [
            {
              "valueCoding": {
                "code": "{{WHY_S1_NOT_PROVIDED}}"
              }
            }
          ]
        }
      ],
    },
    {
      "linkId": "stage1AssessmentDate",
      "answer": [
        {
          "valueDate": "{{S1_ASSESSMENT_DATE}}"
        }
      ]
    },
    {
      "linkId": "whoProvidedStage1",
      "answer": [
        {
          "valueCoding": {
            "code": "{{S1_PROVIDED_BY}}"
          }
        }
      ]
    }
  ]
}
```

```
    },
    {
      "linkId": "werePrescriptionsIntercepted",
      "answer": [
        {
          "valueCoding": {
            "code": "{{PRESC_INTERCEPTED}}"
          }
        }
      ]
    },
  ],
  {
    "linkId": "anyActionsIdentifiedInStage1",
    "answer": [
      {
        "valueCoding": {
          "code": "{{S1_ACTIONS_IDENTIFIED}}"
        }
      }
    ]
  }
]
}
]
},
{
  "linkId": "stage2Questions",
  "item": [
    {
      "linkId": "wasStage2Provided",
      "answer": [
        {
          "valueCoding": {
            "code": "{{WAS_S2_PROVIDED}}"
          }
        }
      ],
      "item": [
        {
          "linkId": "whyStage2NotProvided",
          "answer": [
            {
              "valueCoding": {
                "code": "{{WHY_S2_NOT_PROVIDED}}"
              }
            }
          ]
        }
      ],
    },
    {
      "linkId": "stage2AssessmentDate",
      "answer": [
        {
          "valueDate": "{{S2_ASSESSMENT_DATE}}"
        }
      ]
    },
  ],
  {
    "linkId": "whoProvidedStage2",
    "answer": [
```

```

    {
      "valueCoding": {
        "code": "{{S2_PROVIDED_BY}}"
      }
    }
  ],
  {
    "linkId": "anyIssuesIdentifiedInStage2",
    "answer": [
      {
        "valueCoding": {
          "code": "{{S2_ISSUES_IDENTIFIED}}"
        }
      }
    ]
  }
]
}
],
{
  "linkId": "stage3Questions",
  "item": [
    {
      "linkId": "wasStage3Provided",
      "answer": [
        {
          "valueCoding": {
            "code": "{{WAS_S3_PROVIDED}}"
          }
        }
      ],
      "item": [
        {
          "linkId": "whyStage3NotProvided",
          "answer": [
            {
              "valueCoding": {
                "code": "{{WHY_S3_NOT_PROVIDED}}"
              }
            }
          ]
        }
      ]
    },
    {
      "linkId": "stage3AssessmentDate",
      "answer": [
        {
          "valueDate": "{{S3_ASSESSMENT_DATE}}"
        }
      ]
    },
    {
      "linkId": "whoProvidedStage3",
      "answer": [
        {
          "valueCoding": {
            "code": "{{S3_PROVIDED_BY}}"
          }
        }
      ]
    }
  ]
}

```

```

    }
  ]
},
{
  "linkId": "stage3ConsultationMethod",
  "answer": [
    {
      "valueCoding": {
        "code": "{{S3_CONSULT_METHOD}}"
      }
    }
  ]
},
{
  "linkId": "stage3ConsultationOutcome",
  "answer": [
    {
      "valueCoding": {
        "code": "{{S3_CONSULT_OUTCOME}}"
      }
    }
  ],
  "item": [
    {
      "linkId": "cpcfServicesProvided",
      "answer": [
        {
          "valueCoding": {
            "code": "{{S3_CPCF_SERVICE_PROVIDED}}"
          }
        }
      ]
    },
    {
      "linkId": "signpostedTo",
      "answer": [
        {
          "valueCoding": {
            "code": "{{S3_SIGNPOSTED_TO}}"
          },
          "valueString": "{{S3_SIGNPOSTED_TO_OTHER}}"
        }
      ]
    },
    {
      "linkId": "referrerOrgOds",
      "answer": [
        {
          "valueCoding": {
            "code": "{{REFERRED_ORG_ODS}}"
          }
        }
      ]
    },
    {
      "linkId": "onwardReferralDate",
      "answer": [
        {
          "valueDate": "{{ONWARD_REFERRAL_DATE}}"
        }
      ]
    }
  ]
}

```



```
    }
  ]
}
]
}
]
}
]
}
]
}
```

Other potential responses for Create:

Create: 403: Forbidden

Contains a JSON representation of the error response:

Scenarios:

- Token is valid but user is not allowed to perform certain operations or dont have access to certain resources.
- Invalid ODS Code

```
{
  "resourceType": "OperationOutcome",
  "issue": [
    {
      "severity": "error",
      "code": "forbidden",
      "details": {
        "text": "Access to this resource is forbidden."
      }
    }
  ]
}
```

Create: 500: Unexpected error

Contains a JSON representation of the error response:

```
{
  "resourceType": "OperationOutcome",
  "issue": [
    {
      "severity": "error",
      "code": "exception",
      "details": {
        "text": "internal error"
      }
    }
  ]
}
```

Create: 400: Bad Request

Contains a JSON representation of the error response:

Scenarios:

- Invalid request body
- Invalid field names
- Invalid field values

```
{
  "resourceType": "OperationOutcome",
  "issue": [
    {
      "severity": "error",
      "code": "invalid",
      "details": {
        "text": "Invalid request"
      }
    }
  ]
}
```

Developer Guide to Update Existing DMS Submission

Update: Step 1: Gather your materials

You will need the data described in section Developer Guide to Create DMS Submission.

Apart from that the additional data needed:

Property	Description
ID	Id of the Questionnaire Response. Generated when the record is saved. Included in the response of POST (create).

Update: Step 2: Prepare the request JSON

In the example below, we changed few details, questions and their answers in the existing Questionnaire Response record with given ID.

```
{
  "resourceType": "QuestionnaireResponse",
  "contained": [
    {
      "resourceType": "Practitioner",
      "id": "practitionerId",
      "identifier": [
        {
          "value": "GPXXXX"
        }
      ]
    },
    {
      "resourceType": "Organization",
      "id": "organizationId",
      "identifier": [
        {
          "value": "FXXXX"
        }
      ]
    },
    {
      "resourceType": "Patient",
      "id": "patientId",
      "identifier": [
        {
          "value": "0000000000"
        }
      ],
      "generalPractitioner": [{
        "reference": "#practitionerId"
      }]
    }
  ],
  "identifier": {
    "value": "SUP-0000000001"
  },
  "subject": {
    "reference": "#patientId"
  },
  "author": {
    "reference": "#organizationId"
  },
  "authored": "2021-06",
```

```
"status": "in-progress",
"item": [
  {
    "linkId": "referralDetails",
    "item": [
      {
        "linkId": "referralDate",
        "answer": [
          {
            "valueDate": "2021-03-02"
          }
        ]
      },
      {
        "linkId": "referrer",
        "answer": [
          {
            "valueString": "RXXX"
          }
        ]
      },
      {
        "linkId": "referrerCaseReference",
        "answer": [
          {
            "valueString": "AA4G-BB23-HH78"
          }
        ]
      }
    ]
  },
  {
    "linkId": "stage1Questions",
    "item": [
      {
        "linkId": "wasStage1Provided",
        "answer": [
          {
            "valueCoding": {
              "code": "N"
            }
          }
        ]
      },
      {
        "linkId": "whyStage1NotProvided",
        "answer": [
          {
            "valueCoding": {
              "code": "DECLINED"
            }
          }
        ]
      }
    ]
  }
],
{

```

```

"linkId": "stage2Questions",
"item": [
  {
    "linkId": "wasStage2Provided",
    "answer": [
      {
        "valueCoding": {
          "code": "N"
        }
      }
    ],
    "item": [
      {
        "linkId": "whyStage2NotProvided",
        "answer": [
          {
            "valueCoding": {
              "code": "REFERRED_TO_PHARMACY"
            }
          }
        ]
      }
    ]
  }
],
{
"linkId": "stage3Questions",
"item": [
  {
    "linkId": "wasStage3Provided",
    "answer": [
      {
        "valueCoding": {
          "code": "N"
        }
      }
    ],
    "item": [
      {
        "linkId": "whyStage3NotProvided",
        "answer": [
          {
            "valueCoding": {
              "code": "NOT_ATTENDED"
            }
          }
        ]
      }
    ]
  }
]
}
]
}
}

```

Update: Step 3: Send the request message

You can now prepare and make a PUT call to the NHSBSA API with the following pattern.

Type	Description
URL	https://stg.api.dms.pharmacy.mys.nhsbsa.nhs.uk/v1/QuestionnaireResponse/{{ID}}
Http Headers	Content-Type: application/json, Accept: application/json, Cache-Control: no-cache
Body	JSON representation prepared in Step 2 above

Update: Step 4: Receive your response

A successful response will be sent synchronously within 30 seconds [DN: To check] with an http code 200 (OK) and contain a JSON representation of the updated object in the body of the

response:

```
{
  "resourceType": "QuestionnaireResponse",
  "id": "123e4567-e89b-12d3-a456-426614174000",
  "contained": [
    {
      "resourceType": "Practitioner",
      "id": "practitionerId",
      "identifier": [
        {
          "value": "GPXXXX"
        }
      ]
    },
    {
      "resourceType": "Organization",
      "id": "organizationId",
      "identifier": [
        {
          "value": "FXXXX"
        }
      ]
    }
  ],
  {
    "resourceType": "Patient",
    "id": "patientId",
    "identifier": [
      {
        "value": "0000000000"
      }
    ],
    "generalPractitioner": [{
      "reference": "#practitionerId"
    }]
  }
],
  "identifier": {
    "value": "SUP-0000000001"
  },
  "subject": {
    "reference": "#patientId"
  },
  "author": {
    "reference": "#organizationId"
  },
  "authored": "2021-06",
}
```

```
"status": "in-progress",
"item": [
  {
    "linkId": "referralDetails",
    "item": [
      {
        "linkId": "referralDate",
        "answer": [
          {
            "valueDate": "2021-03-02"
          }
        ]
      },
      {
        "linkId": "referrer",
        "answer": [
          {
            "valueString": "RXXX"
          }
        ]
      },
      {
        "linkId": "referrerCaseReference",
        "answer": [
          {
            "valueString": "AA4G-BB23-HH78"
          }
        ]
      }
    ]
  },
  {
    "linkId": "stage1Questions",
    "item": [
      {
        "linkId": "wasStage1Provided",
        "answer": [
          {
            "valueCoding": {
              "code": "N"
            }
          }
        ],
        "item": [
          {
            "linkId": "whyStage1NotProvided",
            "answer": [
              {
                "valueCoding": {
                  "code": "DECLINED"
                }
              }
            ]
          }
        ]
      }
    ]
  }
],
{
```

```

"linkId": "stage2Questions",
"item": [
  {
    "linkId": "wasStage2Provided",
    "answer": [
      {
        "valueCoding": {
          "code": "N"
        }
      }
    ],
    "item": [
      {
        "linkId": "whyStage2NotProvided",
        "answer": [
          {
            "valueCoding": {
              "code": "REFERRED_TO_PHARMACY"
            }
          }
        ]
      }
    ]
  }
],
{
"linkId": "stage3Questions",
"item": [
  {
    "linkId": "wasStage3Provided",
    "answer": [
      {
        "valueCoding": {
          "code": "N"
        }
      }
    ],
    "item": [
      {
        "linkId": "whyStage3NotProvided",
        "answer": [
          {
            "valueCoding": {
              "code": "NOT_ATTENDED"
            }
          }
        ]
      }
    ]
  }
]
}
]
}

```

Other potential responses for update:

Update: 403: Forbidden

Contains a JSON representation of the error response:

```
{
  "resourceType": "OperationOutcome",
  "issue": [
    {
      "severity": "error",
      "code": "forbidden",
      "details": {
        "text": "Access to this resource is forbidden."
      }
    }
  ]
}
```

Update: 500: Unexpected error

Contains a JSON representation of the error response:

```
{
  "resourceType": "OperationOutcome",
  "issue": [
    {
      "severity": "error",
      "code": "exception",
      "details": {
        "text": "internal error"
      }
    }
  ]
}
```

Update: 400: Bad Request

Contains a JSON representation of the error response:

Scenarios:

- Invalid request body
- Invalid field names
- Invalid field values

```
{
  "resourceType": "OperationOutcome",
  "issue": [
    {
      "severity": "error",
      "code": "invalid",
      "details": {
        "text": "Bad request - Invalid request body"
      }
    }
  ]
}
```

Update: 404: Not Found

Contains a JSON representation of the error response:

Scenarios:

- QuestionnaireResponse record not found with given ID

```
{
  "resourceType": "OperationOutcome",
  "issue": [
    {
      "severity": "error",
      "code": "not-found",
      "details": {
        "text": "resource not found"
      }
    }
  ]
}
```

Developer Guide to Delete DMS Submission

Delete: Step 1: Gather your materials

data needed:

Property	Description
ID	Id of the submission, generated when the record is saved. Included in the response of POST (create).

Delete: Step 2: Send the request

You can now prepare and make a DELETE call to the NHSBSA API with the following pattern.

Type	Description
URL	https://stg.api.dms.pharmacy.mys.nhsbsa.nhs.uk/v1/QuestionnaireResponse/{{ID}}
Http Headers	Content-Type: application/json, Accept: application/json, Cache-Control: no-cache
Body	N/A

Delete: Step 3: Receive your response

A successful response will be sent synchronously within 30 seconds [DN: To check] with an http code 204 (No Content) and not contain a response body.

Other potential responses for delete:

Delete: 403: Forbidden

Contains a JSON representation of the error response:

```
{
  "resourceType": "OperationOutcome",
  "issue": [
    {
      "severity": "error",
      "code": "forbidden",
      "details": {
        "text": "Access to this resource is forbidden."
      }
    }
  ]
}
```

Delete: 500: Unexpected error

Contains a JSON representation of the error response:

```
{
  "resourceType": "OperationOutcome",
  "issue": [
    {
      "severity": "error",
      "code": "exception",
      "details": {
        "text": "internal error"
      }
    }
  ]
}
```

Delete: 404: Not Found

Contains a JSON representation of the error response:

Scenarios:

- Submission record not found with given ID

```
{
  "resourceType": "OperationOutcome",
  "issue": [
    {
      "severity": "error",
      "code": "not-found",
      "details": {
        "text": "resource not found"
      }
    }
  ]
}
```

Developer Guide to Get DMS Submission

Get: Step 1: Gather your materials

You will need:

Property	Description
ID	Id of the submission. Generated when the record is saved. Included in the response of POST (create).

Get: Step 2: Send the request

You can now prepare and make a GET call to the NHSBSA API with the following pattern.

Type	Description
URL	https://stg.api.dms.pharmacy.mys.nhsbsa.nhs.uk/v1/QuestionnaireResponse/{{ID}}
Http Headers	Content-Type: application/json, Accept: application/json, Cache-Control: no-cache
Body	N/A

Get: Step 3: Receive your response

A successful response will be sent synchronously within 30 seconds with an http code 200 (OK) with a response body.

```
{
  "resourceType": "QuestionnaireResponse",
  "id": "123e4567-e89b-12d3-a456-426614174000",
  "contained": [
    {
      "resourceType": "Practitioner",
      "id": "practitionerId",
      "identifier": [
        {
          "value": "GPXXXX"
        }
      ]
    },
    {
      "resourceType": "Organization",
      "id": "organizationId",
      "identifier": [
        {
          "value": "FXXXX"
        }
      ]
    }
  ],
  {
    "resourceType": "Patient",
    "id": "patientId",
    "identifier": [
      {
        "value": "0000000000"
      }
    ],
    "generalPractitioner": [{
      "reference": "#practitionerId"
    }]
  }
}
```

```

],
"identifier": {
  "value": "SUP-000000001"
},
"subject": {
  "reference": "#patientId"
},
"author": {
  "reference": "#organizationId"
},
"authored": "2021-06",
"status": "in-progress",
"item": [
  {
    "linkId": "referralDetails",
    "item": [
      {
        "linkId": "referralDate",
        "answer": [
          {
            "valueDate": "2021-03-02"
          }
        ]
      },
      {
        "linkId": "referrer",
        "answer": [
          {
            "valueString": "RXXX"
          }
        ]
      },
      {
        "linkId": "referrerCaseReference",
        "answer": [
          {
            "valueString": "AA4G-BB23-HH78"
          }
        ]
      }
    ]
  }
],
{
  "linkId": "stage1Questions",
  "item": [
    {
      "linkId": "wasStage1Provided",
      "answer": [
        {
          "valueCoding": {
            "code": "N"
          }
        }
      ]
    },
    {
      "linkId": "whyStage1NotProvided",
      "answer": [
        {

```

```

        "valueCoding": {
          "code": "DECLINED"
        }
      }
    ]
  }
]
},
{
  "linkId": "stage2Questions",
  "item": [
    {
      "linkId": "wasStage2Provided",
      "answer": [
        {
          "valueCoding": {
            "code": "N"
          }
        }
      ],
      "item": [
        {
          "linkId": "whyStage2NotProvided",
          "answer": [
            {
              "valueCoding": {
                "code": "REFERRED_TO_PHARMACY"
              }
            }
          ]
        }
      ]
    }
  ]
},
{
  "linkId": "stage3Questions",
  "item": [
    {
      "linkId": "wasStage3Provided",
      "answer": [
        {
          "valueCoding": {
            "code": "N"
          }
        }
      ],
      "item": [
        {
          "linkId": "whyStage3NotProvided",
          "answer": [
            {
              "valueCoding": {
                "code": "NOT_ATTENDED"
              }
            }
          ]
        }
      ]
    }
  ]
}

```

```
    }
  ]
}
]
}
```

Other potential responses for get:

Get: 403: Forbidden

Contains a JSON representation of the error response:

```
{
  "resourceType": "OperationOutcome",
  "issue": [
    {
      "severity": "error",
      "code": "forbidden",
      "details": {
        "text": "Access to this resource is forbidden."
      }
    }
  ]
}
```


Get: 500: Unexpected error

Contains a JSON representation of the error response:

```
{
  "resourceType": "OperationOutcome",
  "issue": [
    {
      "severity": "error",
      "code": "exception",
      "details": {
        "text": "internal error"
      }
    }
  ]
}
```

Get: 404: Not Found

Contains a JSON representation of the error response:

Scenarios:

- Submission record not found with given ID

```
{
  "resourceType": "OperationOutcome",
  "issue": [
    {
      "severity": "error",
      "code": "not-found",
      "details": {
        "text": "resource not found"
      }
    }
  ]
}
```

Annex: Non NHS Number

Code	Display
1111111111	Non-registered UK resident
2222222222	Non UK resident
3333333333	Data sharing consent not given
4444444444	NHS number not found

Annex: Professional Role

Code	Display
PHARMACIST	Pharmacist
PHARMACY_TECHNICIAN	Pharmacy technician
INDEPENDENT_PRESCRIBER	Independent prescriber

Annex: Community Pharmacy Contractual Framework services

Code	Display
DISPOSAL_OF_MEDS	Disposal of unwanted medicines
NEW_MEDICINE_SERVICE	New Medicine Service
HEALTHY_LIFESTYLE_ADVICE	Healthy Lifestyle Advice
OTHER	Other

Annex: Consultation Method

Code	Display
FTF_PHARMACY	Face to face (pharmacy)
FTF_HOME	Face to face (patient's home)
TELEPHONE	Telephone
TELEMEDICINE	Telemedicine

Annex: Consultation outcome

Code	Display
MEDICINE_REGIMEN_ADVISED	Advice provided on medicines regimen and questions answered
ONWARD_REFERRAL	Onward referral
CPCF_SERVICE_PROVIDED	Other CPCF service provided

Annex: Signposted to

Code	Display
GP	GP Practice
HOSPITAL	Hospital
COMMUNITY_PHARMACY	Community pharmacy
OTHER	Other

Annex: Non-Provision Reason

Code	Display
DECLINED	Declined
REFERRED_TO_PHARMACY	Onward referral to another pharmacy
NOT_ATTENDED	Did not attend